

# Photoshop

# Creative Elements

Community Newsletter

Volume 2 Number 4

August 2009

## Inside this issue...

---

Making a Background Paper  
with a Freebie

CS3 Tip—Cropping a Layer

Midnight Stroll Tutorial

Embossed Glass Technique

Freebie by Squirrelflight

Freebie by Ladybug

June Hall of Fame  
Image of the Month

July Hall of Fame  
Pages of the Month

June Scraps of Fame  
Page of the Month

July Scraps of Fame  
Page of the Month

June and July Honorable Mention

Where in the World  
Southport, NC

## A Message from the Editor

One of our gracious forum members and lover of the newsletter has an offer for you to win a \$50 Gift Certificate for our sponsor site, Viovio. All it takes to get registered is submit an entry for the PCEC Newsletter. For each submission you make to the newsletter your name will be entered into a drawing for the gift certificate. Submission can be an article, a tutorial or a Where in the World feature. Sorry, freebies do not count for an entry. Deadline is August 31st. The more submissions the better. The idea is to get enough submissions to last at least a few months to keep the newsletter monthly. Each month I require at least 4 articles or tutorials to make it worth the time to put the newsletter together.

Also, our forum photobook is still available for purchase. So many people were excited by this idea when it was brought up and were afraid the idea wouldn't be followed through. The photobook was done and sooner than expected but the sales have terrible. Many people who made the most interest in this project have not even ordered. While a few others have ordered more than one book and even reordered. Three dollars from the purchase of each book will go towards helping pay for the maintaining of the forum to keep it advertisement free. The commission to the forum on thirteen books, I am sure didn't go very far. Visit the forum under the Newsletter category for a thread on how to order your book. Or you can follow this link, [The Best of Photoshop Creative Elements Volume One](#)



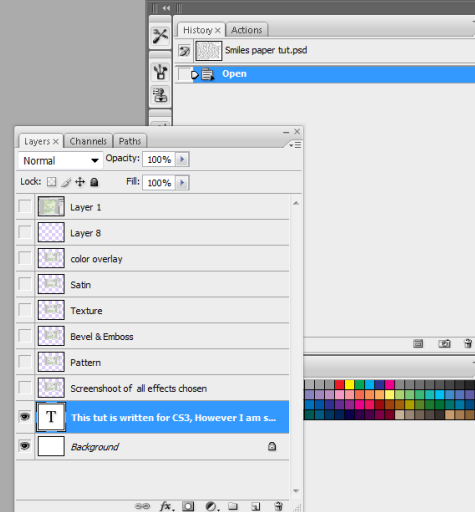


# Making a Background Paper

*Shari aka Smiles*

This tut is written for CS3. However I am sure there's a work around for Elements.

Start out with a 12in x 12 in 300(res) white as your background. Click on the fx then choose a pattern, set the blend mode to Luminosity opacity to 42 percent. Next is the Bevel and emboss settings. Next choose texture, you can refer to the screenshot or choose your own settings. Next choose satin, blend mode multiply lower the opacity to 16 percent. Next choose color overlay, change the blend mode to color burn lower opacity to 49 percent, choose your color (299f37) is the color I chose. Then I choose a texture and changes the blend mode to color dodge, lower the opacity to 47 percent. I hope to see you all make some scrap papers!



*To download the paper  
made with tutorial  
click the image.*





# CS3 Tip Croppin a Layer

*Russ Colby aka Russinator*

I just figured out how to do this a few weeks ago. I use this method often - it has been very helpful to me on my book making project. It's probably already known by everyone, but maybe not.

I'm using CS3 for a Mac computer. I hope it will work on a PC, but I have no way of knowing.

Let's say you are making a montage with several layers. One of your layers needs to be cropped, but you can't use the crop tool because it will not only crop that layer, it will crop every layer at the same time, which will ruin your project. In the top picture below, let's say you want to crop the lower section of the lower center picture so the space between the picture remains the same, while the bottom of the picture is even with the pictures on each side of it.

Make the layer active - the layer that the picture you want to crop is on. Using the Rectangular Marquee Tool mark the area you want to remove, as I did it the top montage. The only effect it will have is on the active layer, so, it doesn't matter how large you make the selection. Then do command X to remove the section you have selected. See the lower picture for the result. Note, in this case I had bevel/emboss on the picture and also a drop shadow. Removing the section I didn't want had no effect on bevel/emboss and/or drop shadow.





# Midnight Stroll Tutorial

*Michelle aka Squirrelflight*

While this treatment would work for a variety of images you will want to think ahead a bit about how you want various tones handled. The hair, skin, dress, and water are all treated differently in this project.

Plugins Needed:

Virtual Photographer: Free

<http://www.optikvervelabs.com/>

Topaz Adjust: 30 day trial available

<http://www.topazlabs.com/adjust/>

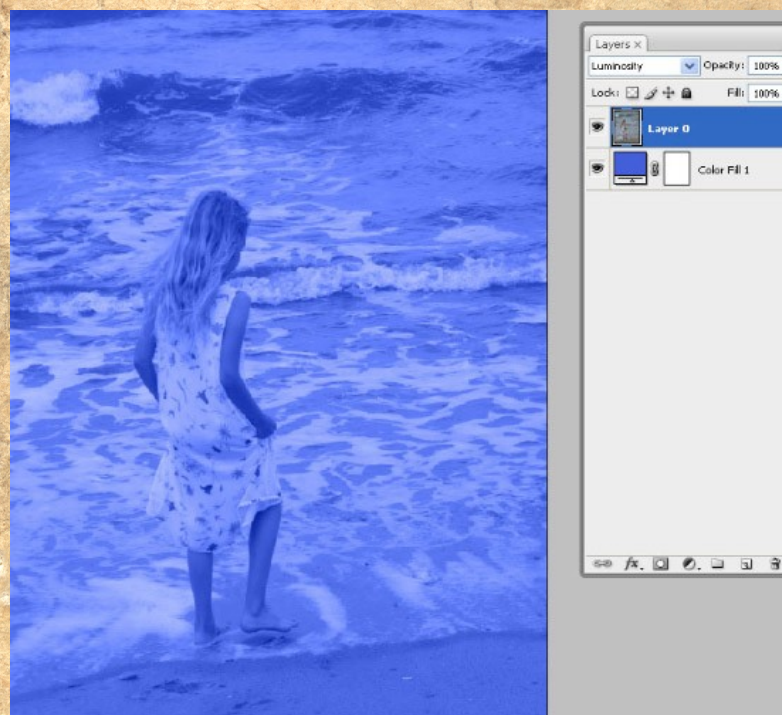


Step 1. Open the image you wish to edit or use the one I used in this tutorial.

Step 2. Double click on layer. When menu box opens hit OK to convert the Background layer to a standard layer.

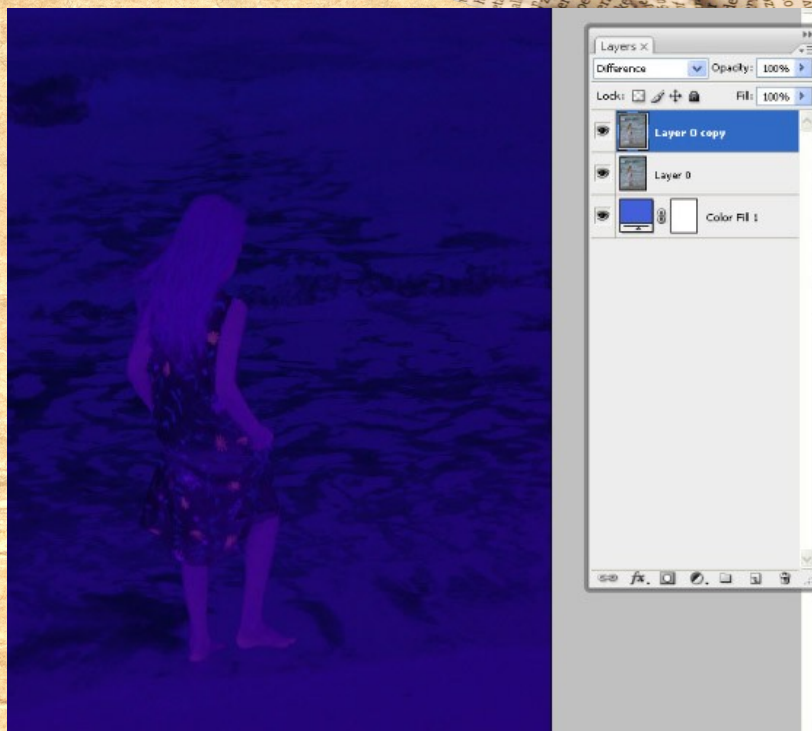
Step 3. Add a solid color adjustment layer in a medium dark blue. I used color #435fda.

Move this adjustment layer below layer 0 and change the blend mode of layer 0 to Luminosity. Your image should now look





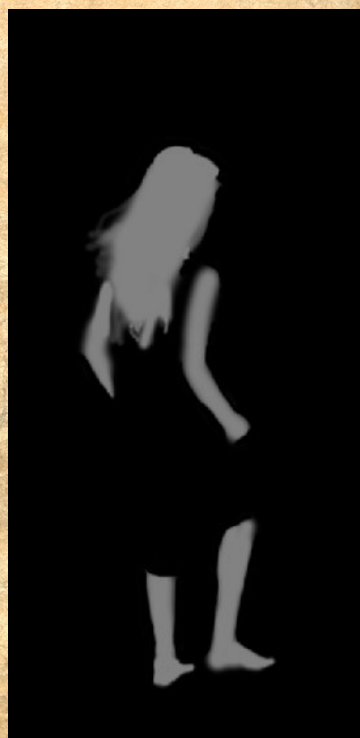
Step 4. With layer 0 selected hit Ctrl J to duplicate the layer. Change the blend mode of this layer to Difference. Your image will look like this.



Step 5. Duplicate layer 0 again. Change the blend mode to normal. Add a layer mask. Select the layer mask and fill with black. (edit > fill > select black in the drop down menu)

Change your foreground color to medium light grey. I used #918f8f. You should have grey as your foreground color and black as your background color.

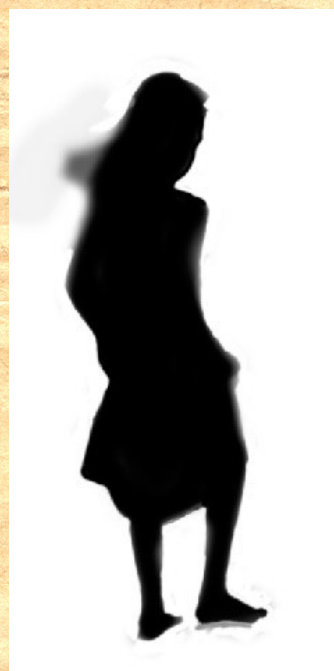
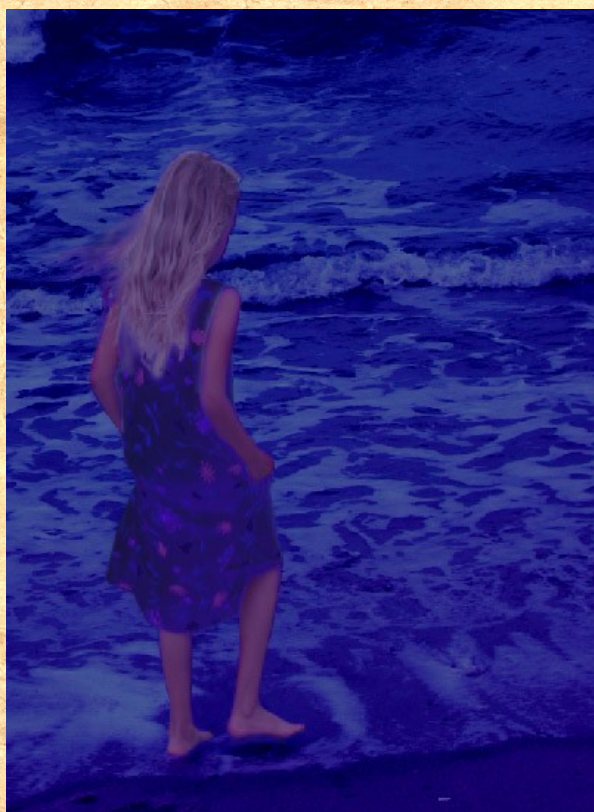
Switch to the brush tool in the toolbox. Click on the layer mask. With a soft edged brush at 100% opacity, go over all areas of skin and the main portion of hair. If you outside the lines just switch your foreground color to black to clean up your work. For light wisps of hair drop the brush opacity down to 30-40% and sweep over them lightly. The smaller the detail the lower the opacity.





Step 6. Duplicate layer 0 copy 2 with the layer mask attached. Drop the opacity down to 5%.

Step 7. Duplicate your top layer. Change the blend mode to linear light. Drop the fill down to 55%. Fill the layer mask with black. With a moderated edged brush, paint white over all the areas of water. Remember, the more precise your are with your masking layers the better your end result will be.



Step 8. Stamp Visible to get a copy of all your layers thus far. (shift ctrl alt E) Rename this layer SV

Step 9. Apply Topaz Adjust Small Details—Default settings.

Step 10. Stamp Visible. Apply Virtual Photographer High Key filter. Set Fill (CS3) to 40%. PSE users just adjust opacity to 40%.

Step 11. Stamp Visible. Apply Virtual Photographer Dreamy filter. Set Fill to 50%. (or opacity) Change blend mode to Pin Light.



Topaz Adjust



VP High Key



VP Dreamy





# Embossed Glass Technique

Linda aka ljamesol with PSE6/MAC

I've found the technique works best on images that aren't too busy: ie: have large areas that are fairly smooth. Settings listed are for the example. They may need to be tweaked for other images. The following are definitions and directions that will be useful references when following the tutorial.

Command/control = mac/pc

Option/alt = mac/pc

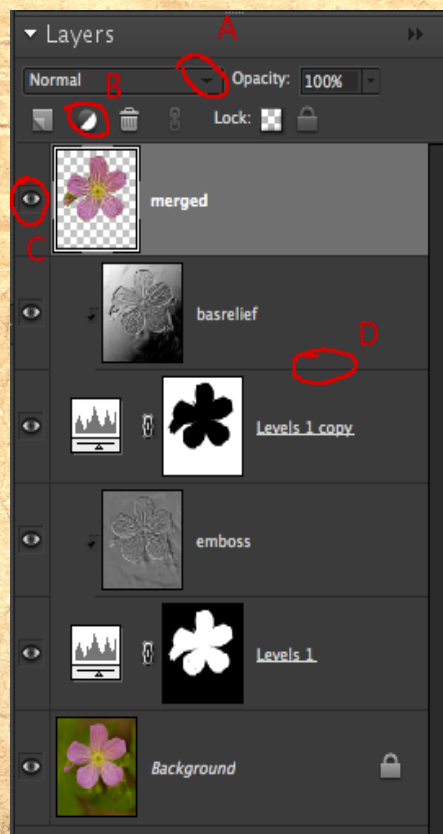
## How to hijack the mask from an adjustment layer for PSE

**A:** Click on the Create Adjustment Layer icon in the layers palette. Choose any adjustment layer. I used levels in the example.

**B:** Click ok without making any changes.

**C:** In the layers palette click on and drag the adjustment layer directly below the layer for which you wish to apply the mask.

**D:** While holding down the option/alt key hover the cursor over the dividing line between the two layers until a double moon appears and click once on the double moon symbol. The top layer will indent. The adjustment layer mask now belongs to the indented layer.



A= Layer Blend Mode

B= Create New Adjustment Layer

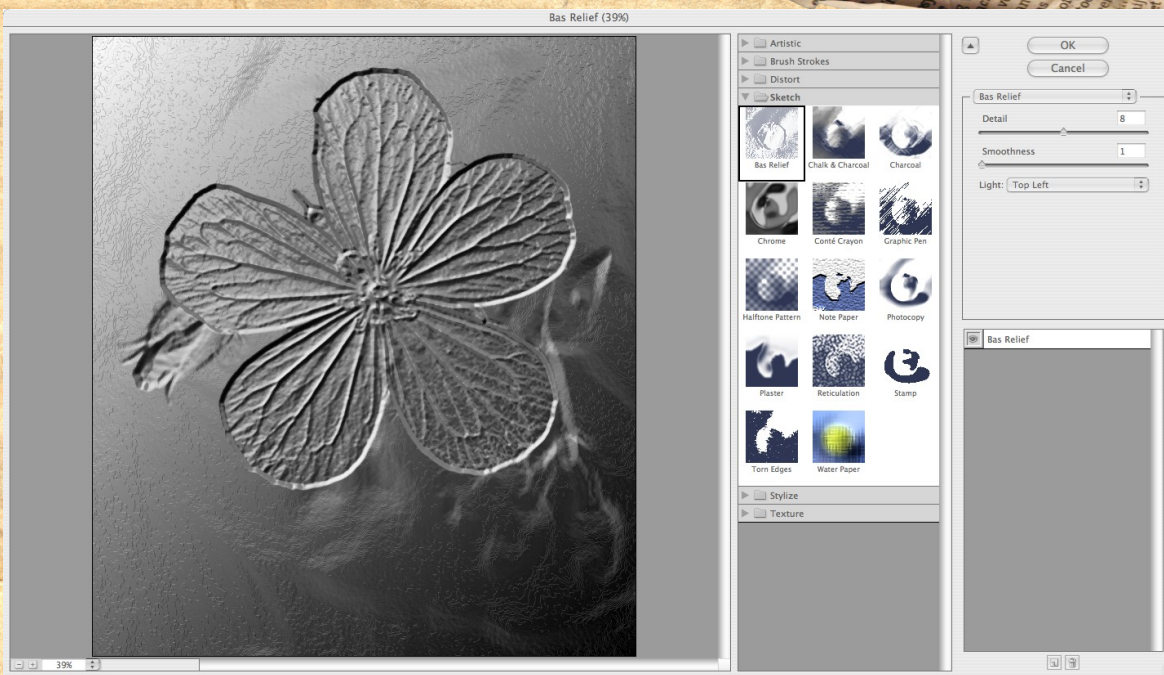
C= Layer Visibility

D= Dividing line for linking layers

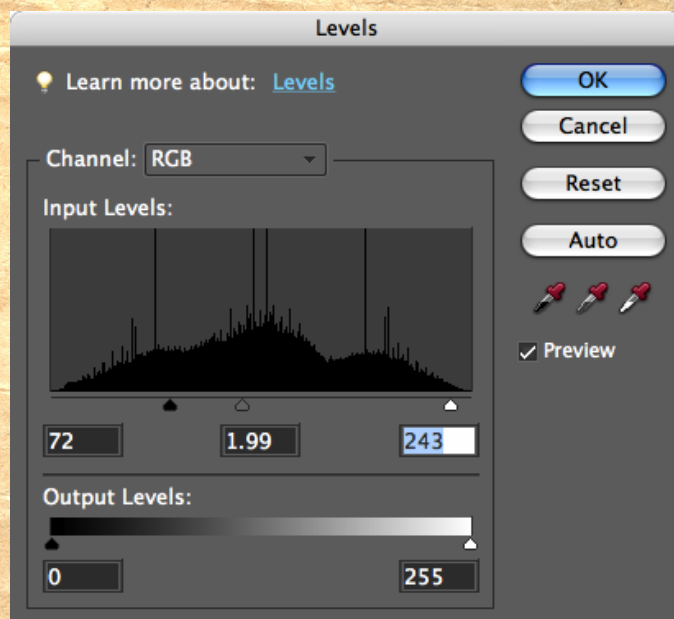
## Let's Get Started

1. Open image in PSE and make a duplicate image so that you will be able to see original as a comparison and also don't accidentally overwrite original later. If the original had layers flatten in the copy. File>duplicate and check flatten layers image.
2. Make 2 copies of the background layer by pressing command/control + J twice. There should now be 3 layers showing in the layers palette. Name the top layer Bas Relief and the middle layer Emboss by double clicking on the layer in the layer palette.
3. Click on the bas relief layer to make that layer active. Go to filter>sketch>bas relief. Set the Light to whichever direction it is from in the pic in this case top left. For the example image I used Detail of 8 and smoothness of 1. You will be aiming for a nice smooth glass-like effect on the background; so don't worry if doesn't seem strong enough on the flower and click ok.



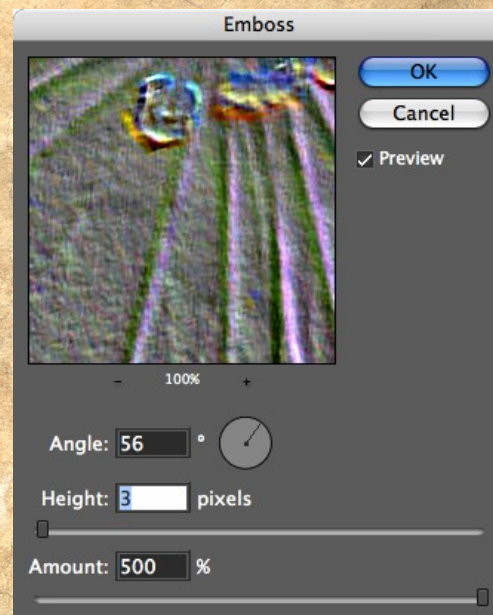


4. With the bas relief layer still active press command/control + L to make a levels adjustment on this layer. We will be aiming for a fairly high contrast image so bring the sliders in close to the step part of the histogram. See screen shot. Click ok and change the blend mode of this layer to overlay.



5. Click on the eyeball for the bas relief layer to hide it from sight temporarily.

6. Make the emboss layer active and go to filter>stylize>emboss. This time you want the angle to go slightly against the lighting direction so I chose 56 degrees which would be top right. Set the amount to 500% for any image. The height will vary depending on the image and resolution. For this example I used 3. Click OK





7. Now we need to get rid of the weird colors. Press command/control + U to bring up a hue/saturation window. Take the saturation all the way to the left to minus 100. Click ok. Make it higher contrast by command/control+L as in the bas relief layer. Change layer blend mode to overlay.

8. Turn the eye on the bas relief layer back on by clicking on it. It still doesn't look all that great, but we are getting there. Add a mask to both the bas relief and emboss layers or follow the directions for hijacking an adjustment layer mask.

9. Make the emboss layer active and click once inside the white area on the mask. Go to edit>fill layer and choose black. This will cover up the emboss effect. We are going to let the emboss show only on the flower.

10. Set your foreground color to white: command/control +D, then press x .

11. Choose the regular brush tool, mode normal, opacity 100%. Paint directly on the photo over the flower. You will start to see white appearing on the mask in the shape of the flower.

**Tip:** To check your progress, hold down the command/control key and click once inside the mask which will select the white area. You will then be able to find areas missed as they will not be included within the bounds of the marching ants. You will have to deselect before can paint over the missed areas.

12. Once you have all areas of the flower included in the marching ants(see tip step 11) keep the selection active and click once inside the mask of the bas relief layer. Go to edit>fill selection and choose black. Voila! The bas relief is now masked over the flower without having to repaint.

13. At this point there was too much grainy texture between the flower veins to suit my taste. I've found the anisotropic filter is most useful for smoothing that out without blurring the veins too much.

14. First we need to make a merged copy to work on. Make the topmost layer in the palette active. Hold down the command/control + shift + option/alt + E keys too make a merged copy of the layers.

15. I don't want to change the background, so I need to delete that from the merged layer. With the merged layer active command/control click once inside the mask in which the background is white to select it. Now press delete.

16. Go to filter>stylize>diffuse. At the bottom of the list choose anastrphic and click ok. I had to apply the filter 2 more times before I liked the effect. To repeat a filter just press command/control + F.





Here is a before and after of the sample image:



Before

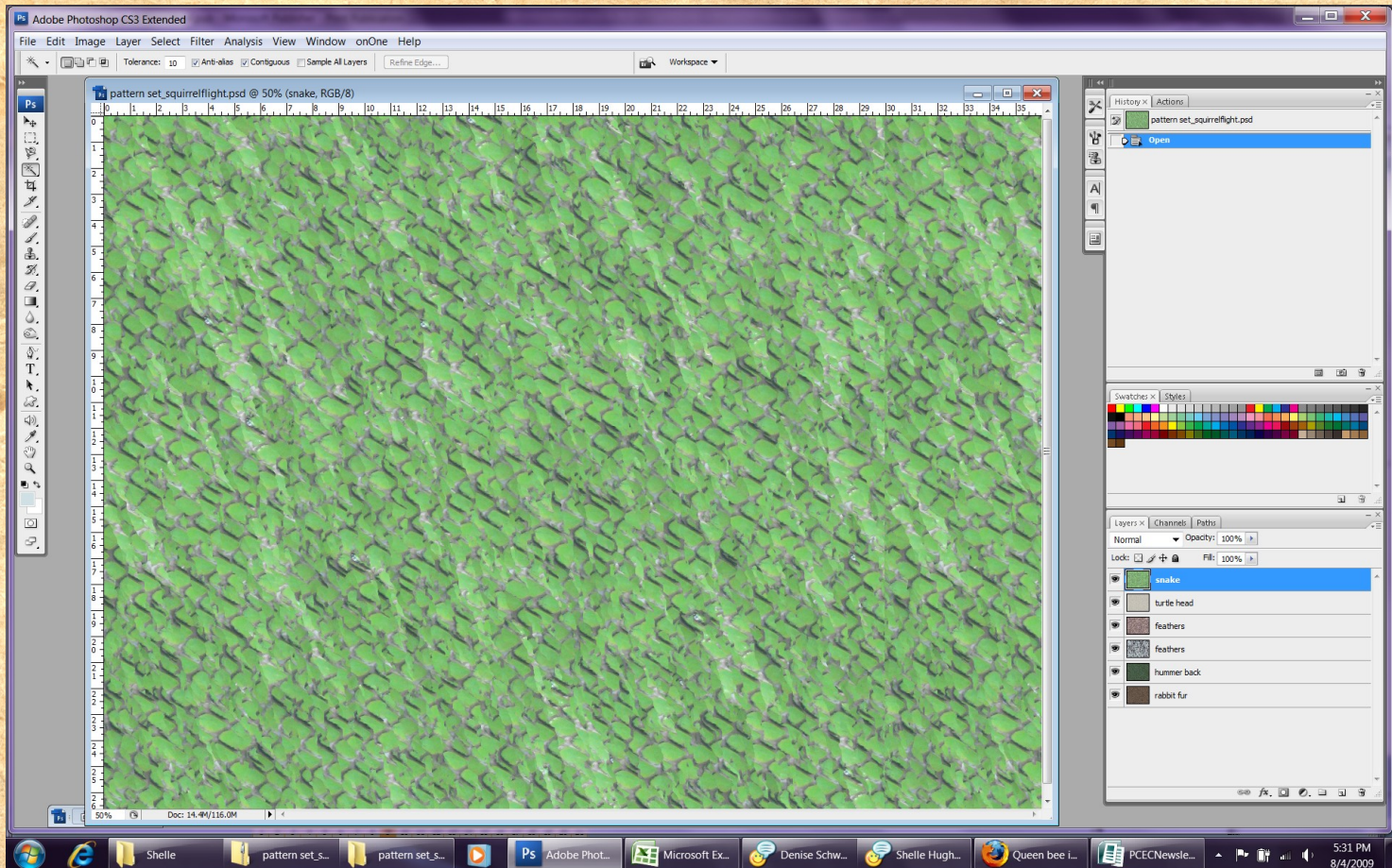
After



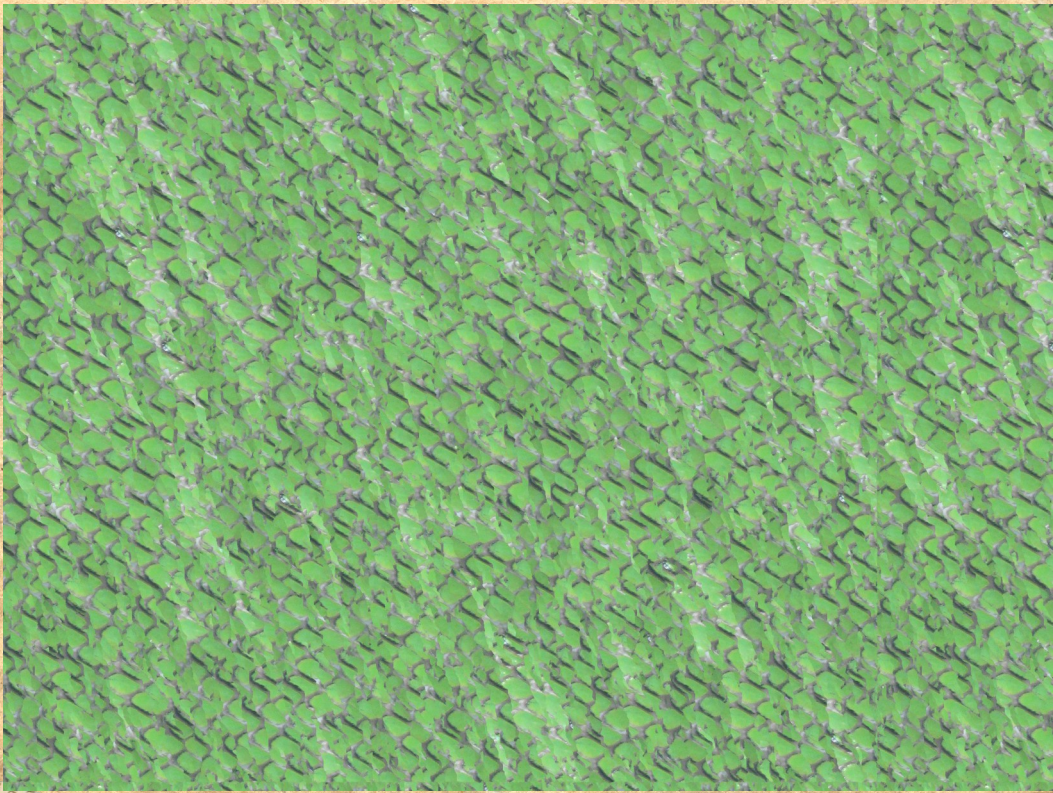


# Freebie by Michelle

aka Squirrelflight



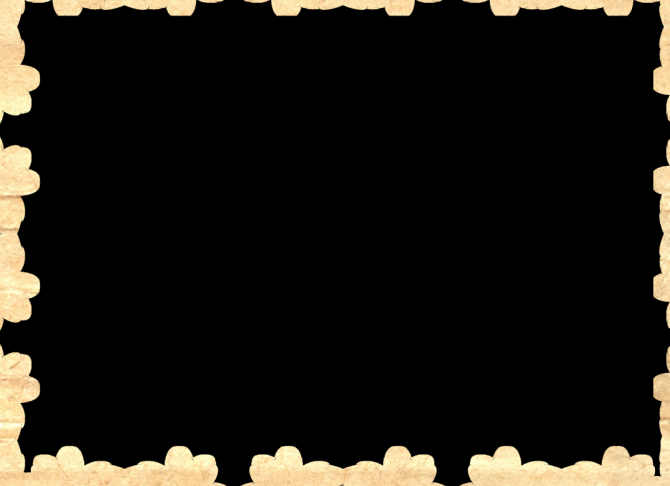
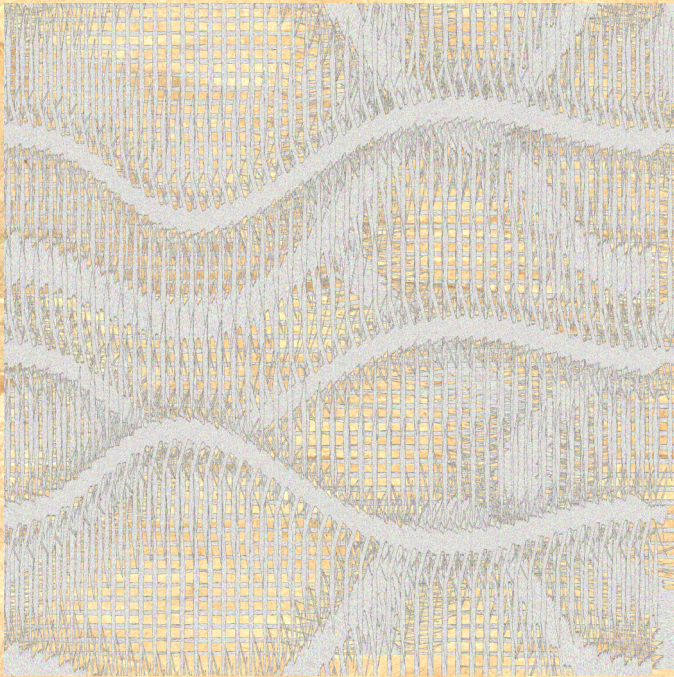
*Pattern Template  
can be downloaded  
by clicking the pattern  
image to the right.*





# Freebie by Judy

*aka Ladybug*



*Click here to [download](#)*





# June Hall of Fame Image of the Month



*Image of the Month*

*Congratulations*

*Dusty Car by skyfisher*



*A Tribute (thank you for what you did)*

*2nd Place*

*Tribute by Dane*



*Image of the Month*

*Dusty Car by skyfisher*



# June IOM Honorable Mention



*Dining Room 2 by Geoff Chalcraft*



*MG 0294 box by Michel B*



# July Hall of Fame Image of the Month



*Image of the Month*

*Congratulations*

*After the Monsoons by Joe Kostoss*



*2nd Place*

*Grace by Kimi\_boo*



*3rd Place*

*Chuck Sunset Silhouette by Snowfall*



# July IOM Honorable Mention



*Casey by Smiles*



*Water Lillies by Christell*



# June Scraps of Fame Page of the Month



*Page of the Month  
Congratulations Suzil*



*2nd Place  
MJewels*



*3rd Place  
AngelieKim*



# July Scraps of Fame Page of the Month

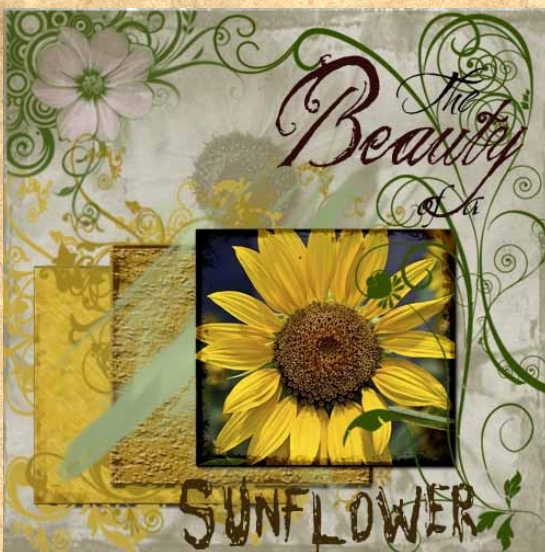
**Oh!** the \*places\* I have been.....

I know my senior year will be *quick* to end. I will make *memories* that will last a life time, and have *friendships* that will never bend. Senior year will come to an end, and this will open another *door* for the places I have not *been!*

written by Heather Shumans for Casey Graham



Page of the Month  
Congratulations Smiles



2nd Place  
Christell



3rd Place - Tie  
AngelicKim &



Christell



# Where in the World

Michelle aka Squirrleflieht



Southport, NC has a rich history involving the civil war, Indians, and lots of other interesting facts that I can't remember.

So I'm gonna give the grand tour of things I

Southport is host to the NC state 4th of July Festival. Thousands of people join our little town for this event. Actually most of the 25000 people there are probably tourists. The locals usually hide, but not me. I'm a huge fan of the parade



What we don't take seriously? How far it is to Bermuda. (sign is wrong)

What we do take seriously? Our Live Oaks. So yes, this house was built around the tree. Live Oaks are evergreen and most of the oaks in Southport are hundreds of years old. As part of their





And of course there are the beaches and the





Then there is Boiling Spring Lakes—a city within the city of Southport. That's where I work and have lived for over 10 yrs. We have our own government but no zip code and it is hotly debated whether it is a 'city' or a 'subdivision'...

Someone once told me though that Boiling Spring Lakes has one of the 'most diverse ecosystems in the world'. There are Cyprus swamps hidden deep within BSL, gorges, wooded areas, marshes, and who knows what else. We have the endangered Red Cockaded Woodpecker and rare Carnivorous plants along with a multitude of interesting plants and various animals and wildlife. And if you see someone stop



Water Lily



Snapping Turtle



Alligator in Orton Pond



Bullfrog



So I think I will leave you here with some of our wildlife to enjoy! Hopefully you will find time to join the tourists and come see Southport for yourself!



Piture Plant and Bloom



Venus Flytrap with flower stalk



Red-Cockaded



Orton Pond